



Addison Gardens
Brook Green, W14

£825,000

🛏️ 3 🚪 2 🏠 Flat/Apartment

HOMESITE

Stylish three bedroom apartment with a private patio

FULL DETAILS

This stylish three bedroom, two bathroom lateral apartment with a decked terrace is located approximately five minutes from the exciting regeneration project of Olympia which is set to be London's newest cultural landmark combining art, culture, entertainment, exhibitions, music, food, drink and work spaces. Thoughtfully designed the apartment has an abundance of light achieved through a wall of bi-folding glass doors opening onto the terrace, sky lights & full size sash windows. Set on this striking red brick tree lined street in the heart of West London it is ideally placed for excellent transport links into the city, the vibrant & eclectic Goldhawk Road, Westfield shopping complex & Shepherds Bush with their diverse array of eateries, bars, shopping & transport. For drivers, the A4 offering convenient access to Heathrow Airport and the A40 are both easily accessible.

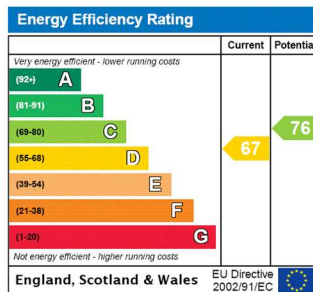
PROPERTY FEATURES

- Spacious reception Room
- Wooden Floors
- Three bedrooms
- Two bathrooms
- Decked terrace
- Plenty of natural light
- Contemporary design throughout
- Council Tax Band D - Hammersmith & Fulham

PROPERTY INFO

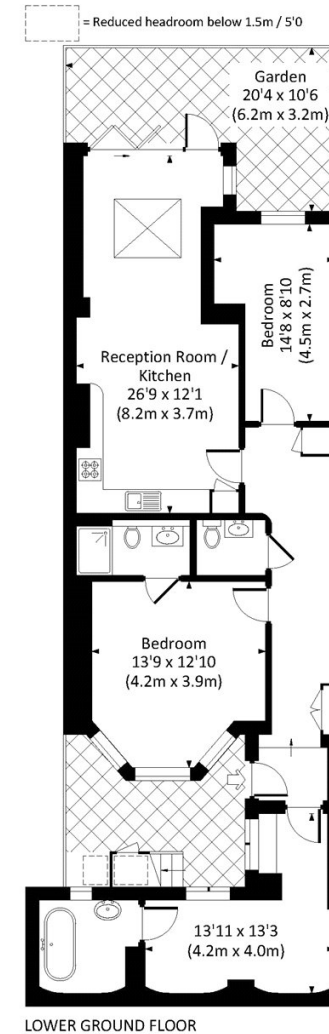
TENURE
Share of Freehold

SERVICE CHARGE
approx £1000 pa



ADDISON GARDENS, W14

Approx. gross internal area
1014 Sq Ft. / 94.2 Sq M.



All measurements have been made in accordance with RICS code of Measuring Practice which are approximate only and only for illustrative purposes. For the avoidance of doubt, Dowling Jones Design shall not be liable for any reliance on these measurements. © 2018 www.dowlingjones.com 020 7610 9933