



Monmouth Road
Bayswater, W2

£630 per week

🛏️ 1 🚿 1 🏠 Flat/Apartment

HOMESITE

A very smart and well-designed one bedroom apartment

FULL DETAILS

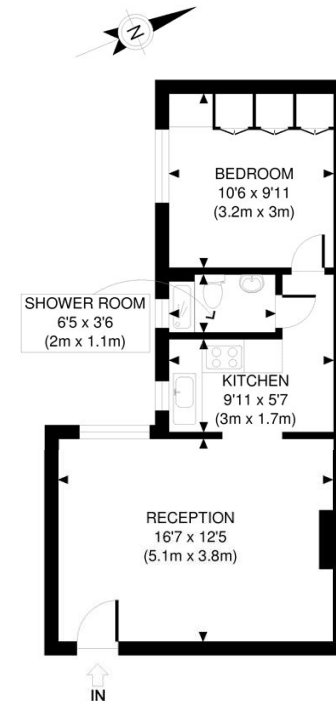
A very smart and well-designed one bedroom apartment which offers great light and space. Finished to a very good standard throughout with wooden floors and good ceiling heights. Located just off Westbourne Grove with everything you could need on your doorstep. There are also a good number of bus routes available and Notting Hill Gate, Bayswater and Queensway tubes are a short walk away offering use of the central, district and circle line tubes. Paddington station with the Heathrow Express is also close by.

PROPERTY FEATURES

- One Double Bedroom
- Modern Decor and Furniture
- Wooden floors
- Period Building
- Superb Location, Just Off Westbourne Grove
- High Spec Kitchen & Bathroom
- Westminster Council - Band D
- Short walk to Queensway, Bayswater & Notting Hill Gate station

Energy Efficiency Rating		Current	Potential
Very energy efficient - lower running costs			
(92+)	A		
(81-91)	B		
(69-80)	C		
(55-68)	D	62	72
(39-54)	E		
(21-38)	F		
(1-20)	G		
Not energy efficient - higher running costs			
England, Scotland & Wales		EU Directive 2002/91/EC	

Monmouth Road, W2



RAISED GROUND FLOOR
GROSS INTERNAL
FLOOR AREA 413 SQ FT

APPROX. GROSS INTERNAL FLOOR AREA 413 SQ FT / 38 SQM
Ref: Copyright

Disclaimer: Floor plan measurements are approximate and are for illustrative purposes only. While we do not doubt the floor plan accuracy and completeness, you or your advisors should conduct a careful, independent investigation of the property in respect of monetary valuation