

Talbot Road
Notting Hill, W2

£2,300 per month

 1  1  Flat/Apartment

HOMESITE

A split level one bedroom apartment with a balcony

FULL DETAILS

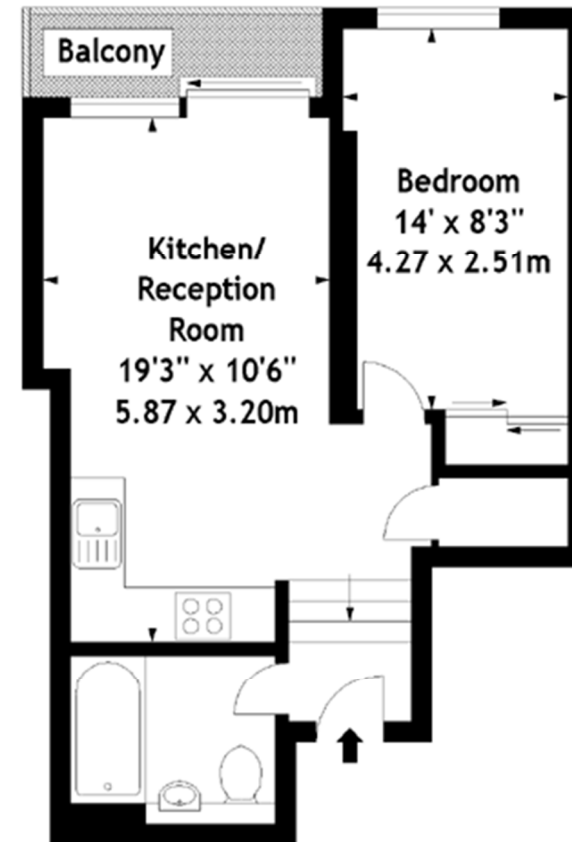
Introducing a charming and bright apartment located on the third floor of this attractive period building with a lift. This well-presented property has wooden floors and boasts a spacious double bedroom, a comfortable reception room, and a modern bathroom. The apartment exudes a peaceful ambiance, making it an ideal retreat from the bustling city. Enjoy the convenience of a private balcony and access to residents' parking. Situated on Talbot Road, residents will benefit from easy access to local amenities, including shops, restaurants, and transport links including Notting Hill and Westbourne Park tube stations. Paddington station with the Heathrow Express and Elizabeth line is also close by.

PROPERTY FEATURES

- Recently Redecorated
- Period Conversion
- Third floor with lift
- Balcony
- Full of Natural Light
- Wooden Floors
- 428 sq ft / 39.8 m2

Energy Efficiency Rating		Current	Potential
Very energy efficient - lower running costs			
(92+)	A		
(81-91)	B		
(69-80)	C		
(55-68)	D	63	71
(39-54)	E		
(21-38)	F		
(1-20)	G		
Not energy efficient - higher running costs			
England, Scotland & Wales		EU Directive 2002/91/EC	

Talbot Road, W2
Approx. Gross Internal Area
428 Sq Ft - 39.76 Sq M



Third Floor

Every attempt is made to ensure accuracy, however measurements are Approximate and for illustrative purposes only. Not to Scale

© Datography UK Ltd 2006

Photographs * Floorplans * Virtual Tours
Tel: 0207 386 3735 www.datography.com