

Portobello Road
Notting Hill, W11

£1,500 per week

 2  2  Flat/Apartment

HOMESITE

First floor two-bedroom with large private terrace

FULL DETAILS

A fantastic lateral apartment arranged over the first floor of this stunning building on Portobello Road with a private terrace. Having been recently refurbished throughout and newly decorated the apartment is in excellent condition and finished to a very high standard. The large reception room offers fantastic space and has double French Doors which open out onto the private terrace. Both bedrooms are double rooms and have en-suite bathrooms, there is also a separate W.C. The flat has wooden floors throughout and also ample storage.

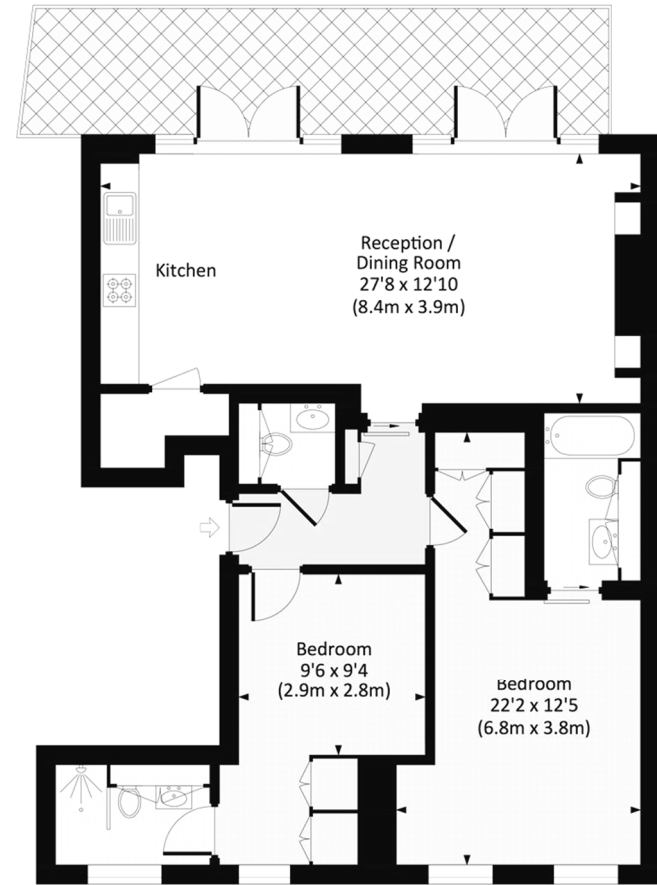
Located on the world-famous Portobello Road in the heart of Notting Hill with a stunning selection of shops, galleries, markets, boutiques and a variety of eateries that are synonymous with the area on your doorstep.

PROPERTY FEATURES

- Lateral Apartment
- Large Private Terrace
- Two Double Bedrooms
- En-Suite Shower Room
- En-Suite Bathroom
- Guest W.C.
- Large Reception/Dining Room
- Open Plan Kitchen
- 84.7 m² / 912 sq ft

Energy Efficiency Rating		
	Current	Potential
Very energy efficient - lower running costs		
(92+) A		
(81-91) B	84	84
(69-80) C		
(55-68) D		
(39-54) E		
(21-38) F		
(1-20) G		
Not energy efficient - higher running costs		
England, Scotland & Wales	EU Directive 2002/91/EC	

PORTOBELLO ROAD, W11
Approximate Gross Internal Area
84.7 sq m / 912 sq ft



First Floor