

Princes Square
Bayswater, W2

£825 per week

 1  1  Flat/Apartment

HOMESITE

Stunning first floor apartment with private balcony

FULL DETAILS

This stunning first floor one bedroom apartment has just been completely refurbished throughout and seamlessly fuses modern design with beautiful period features. The apartment has wonderfully high ceilings, ornate cornicing and a private balcony overlooking one of Bayswater's finest communal gardens. Comprising of a reception room with open plan kitchen, double bedroom with en-suite. Princes Square is superbly located for easy access to the vast amenities of both Westbourne Grove and Notting Hill Gate. There are excellent transport links nearby including Notting Hill Gate and Bayswater tube stations (Central, Circle & District lines). Paddington Rail station along with the Heathrow Express and Elizabeth Line is also close by.

PROPERTY FEATURES

- First Floor
- Private Balcony
- Newly Refurbished
- Double Bedroom with en-suite
- Period Features
- Approx 531 sq ft
- Band D - Westminster Council

PROPERTY INFO

TENURE
To be advised, 0 years remaining

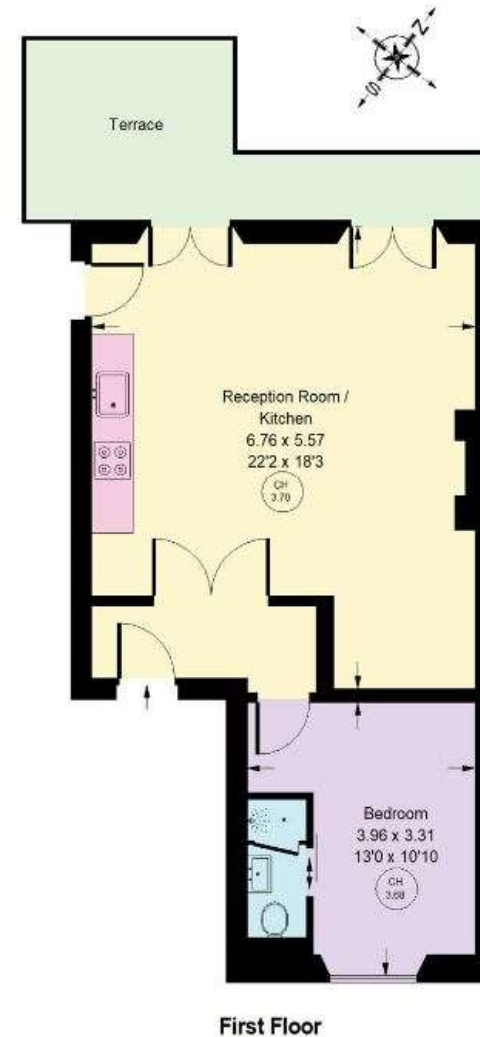
SERVICE CHARGE
£ per annum

GROUND RENT
£ per annum

Energy Efficiency Rating		Current	Potential
Very energy efficient - lower running costs			
(92+) A			
(81-91) B			
(69-80) C			
(65-68) D		71	80
(39-64) E			
(21-38) F			
(1-20) G			
Not energy efficient - higher running costs			
England, Scotland & Wales		EU Directive 2002/91/EC	

Princes Square, W2

Approx. Gross Internal Area
49.3 sq m / 531 sq ft



We have every attempt to ensure the accuracy of the floor plan, measurements are approximate and not to scale. No guarantee is given as to the actual square footage of the property. Figures shown are for guidance only. Plans of this building are for reference only, not to be used for valuation.

*Tenant admin fee: 1 person (£100 + VAT), 2 people (£200 + VAT), 3 people (£250 + VAT), 4 people (£300 + VAT), Referencing: £30 per person, Renewal Agreement fee: £50 (including VAT). Typical deposit equal to 6 weeks rent and rent is paid in advance (normally monthly or quarterly). There will be a check out fee at the end of the tenancy, the price of which will depend on the size of the property. N.B. We have produced these sales particulars as a general guide. It is essential that you check with us before undertaking an inspection. We have not carried out a detailed survey of the property and have not tested the services, appliances or specific fittings. Room sizes are for general guidance purposes and should not be relied upon for fitting carpets or furnishings. Pictures may have been digitally enhanced. Floor plans are not to scale. Fittings shown on floor plans may not match the actual layout or size of fittings at the property. None of the statements as to the property contained in these particulars are to be relied upon as statements or representations of fact. All statements in these particulars as to this property are made without responsibility on the part of Homesite. The vendor does not make or give and neither Homesite nor any person in their employment has the authority to make or give any representation or warranty whatever in relation to this property.