



Princes Square
Bayswater, W2

£900 per week

 1  1  Flat/Apartment

HOMESITE

Stunning first floor apartment with private balcony

FULL DETAILS

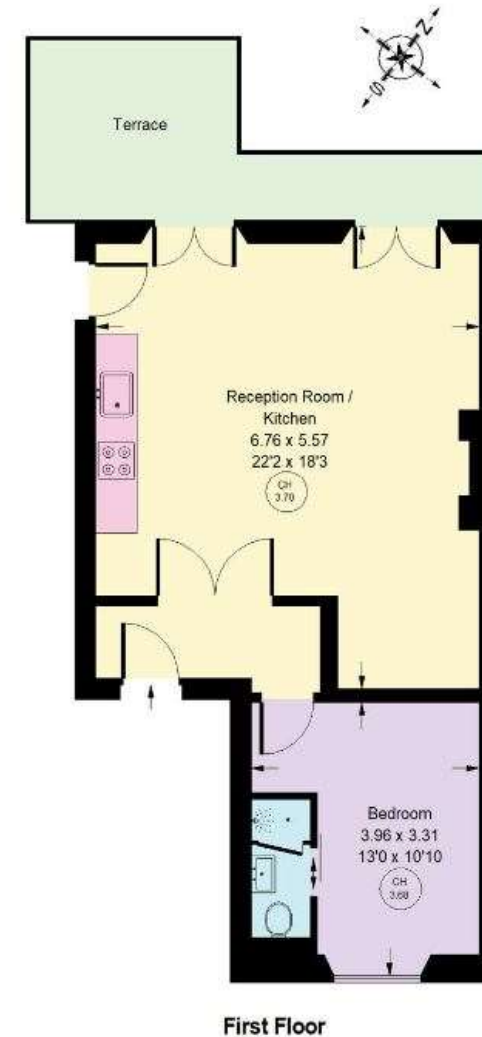
This stunning first floor one bedroom apartment has just been completely refurbished throughout and seamlessly fuses modern design with beautiful period features. The apartment has wonderfully high ceilings, ornate cornicing and a private balcony overlooking one of Bayswater's finest communal gardens. Comprising of a reception room with open plan kitchen, double bedroom with en-suite. Princes Square is superbly located for easy access to the vast amenities of both Westbourne Grove and Notting Hill Gate. There are excellent transport links nearby including Notting Hill Gate and Bayswater tube stations (Central, Circle & District lines). Paddington Rail station along with the Heathrow Express and Elizabeth Line is also close by.

PROPERTY FEATURERS

- First Floor
- Private Balcony
- Newly Refurbished
- Double Bedroom with en-suite
- Period Features
- Approx 531 sq ft
- Band D - Westminster Council

Princes Square, W2

Approx. Gross Internal Area
49.3 sq m / 531 sq ft



We have every attempt been made to ensure the accuracy of the floor plan, measurements are approximate and not to scale.
No guarantee is given as to the actual square footage of the property, based on the plan figures given are for guidance.
Plans of this building prepared only, not to be used for valuations.