

Princes Square
Bayswater, W2

£923 per week

 3  1  Flat/Apartment

HOMESITE

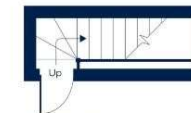
Stunning three bedroom apartment with great views

FULL DETAILS

Wonderfully bright three bedroom apartment located on the top floor of this beautiful period conversion. Newly refurbished throughout and finished to an excellent standard. Princes Square is superbly located for easy access to the vast amenities of both Westbourne Grove and Notting Hill Gate. There are excellent transport links nearby including Notting Hill Gate and Bayswater tube stations (Central, Circle & District lines). Paddington Rail station along with the Heathrow Express and Elizabeth Line is also close by.



FOURTH FLOOR



THIRD FLOOR

PROPERTY FEATURES

- Newly Refurbished
- Three Double Bedrooms
- Large Reception Room
- Open Plan Kitchen
- Wood Floors
- Council Tax Band D - Westminster City Council