

Iverna Court
Kensington, W8

£1,995 per week

 3  2  Flat/Apartment

HOMESITE

Stunning three-bedroom apartment with porter

FULL DETAILS

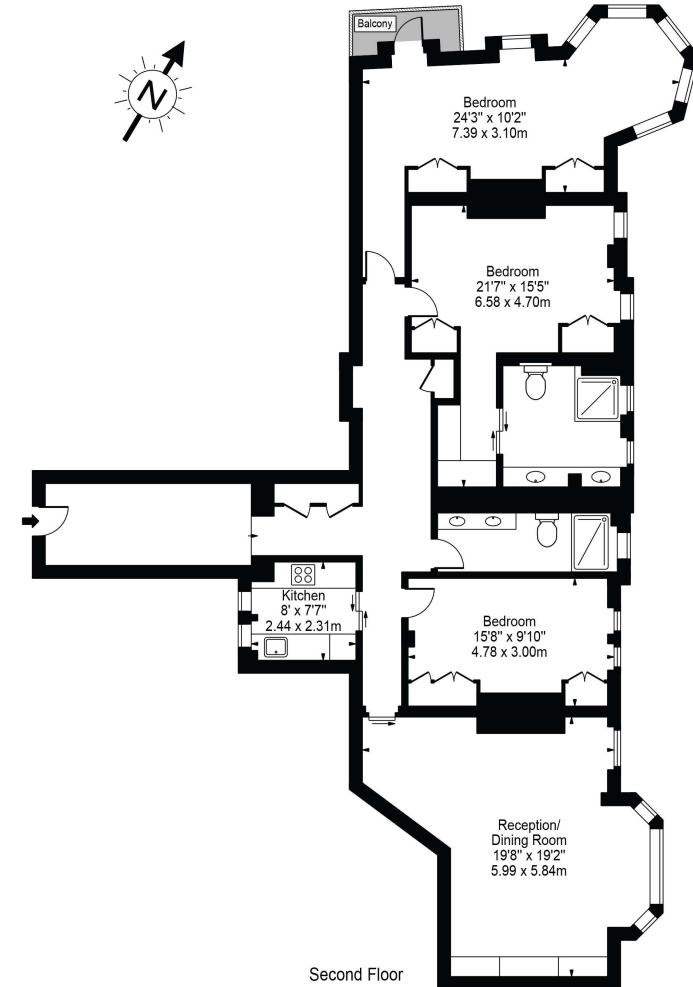
Stunning lateral three-bedroom, two-bathroom apartment in an attractive red brick portered mansion block. The property is located on the second-floor (with lift) and benefits from an abundance of light throughout. The property has recently been refurbished to a high standard, and offers a spacious reception / dining room, separate kitchen with Miele appliances, and three double-bedrooms, all with built in storage. It also comprises two spacious and luxurious bathrooms (one en-suite). The property is conveniently located moments from Kensington High Street giving easy access to all the locals shops and restaurants and it's tube station (District Line & Circle Line).

PROPERTY FEATURES

- Three bedrooms
- Two bathrooms
- Recently refurbished
- Concierge
- Lift access
- High specification
- EPC C
- Kensington & Chelsea - Band G

Energy Efficiency Rating		Current	Potential
Very energy efficient - lower running costs			
(92+)	A		
(81-91)	B		
(69-80)	C		
(55-68)	D		
(39-54)	E		
(21-38)	F		
(1-20)	G		
Not energy efficient - higher running costs			
England, Scotland & Wales		74	82
EU Directive 2002/91/EC			

Iverna Court, W8
Approx. Gross Internal Area 1556 Sq Ft - 144.56 Sq M



For Illustration Purposes Only - Not To Scale

This floor plan should be used as a general outline for guidance only and does not constitute in whole or in part an offer or contract. Any intending purchaser or lessee should satisfy themselves by personal inspection, searches, enquiries and full survey as to the correctness of each statement. Any areas, measurements or distances quoted are approximate and should not be used to value a property or be the basis of any sale or let.

*Tenant admin fee: 1 person (£100 + VAT), 2 people (£200 + VAT), 3 people (£250 + VAT), 4 people (£300 + VAT), Referencing: £30 per person, Renewal Agreement fee: £50 (including VAT). Typical deposit equal to 6 weeks rent and rent is paid in advance (normally monthly or quarterly). There will be a check out fee at the end of the tenancy, the price of which will depend on the size of the property. N.B. We have produced these sales particulars as a general guide. It is essential that you check with us before undertaking an inspection. We have not carried out a detailed survey of the property and have not tested the services, appliances or specific fittings. Room sizes are for general guidance purposes and should not be relied upon for fitting carpets or furnishings. Pictures may have been digitally enhanced. Floor plans are not to scale. Fittings shown on floor plans may not match the actual layout or size of fittings at the property. None of the statements as to the property contained in these particulars are to be relied upon as statements or representations of fact. All statements in these particulars as to this property are made without responsibility on the part of Homesite. The vendor does not make or give and neither Homesite nor any person in their employment has the authority to make or give any representation or warranty whatever in relation to this property.