

Westbourne Grove  
Notting Hill, W11

£2,100 per month

 1  1  Flat/Apartment

**HOMESITE**

# Bright top floor apartment

WESTBOURNE GROVE, W11

Approx. gross internal area  
552 Sq Ft. / 51.3 Sq M.



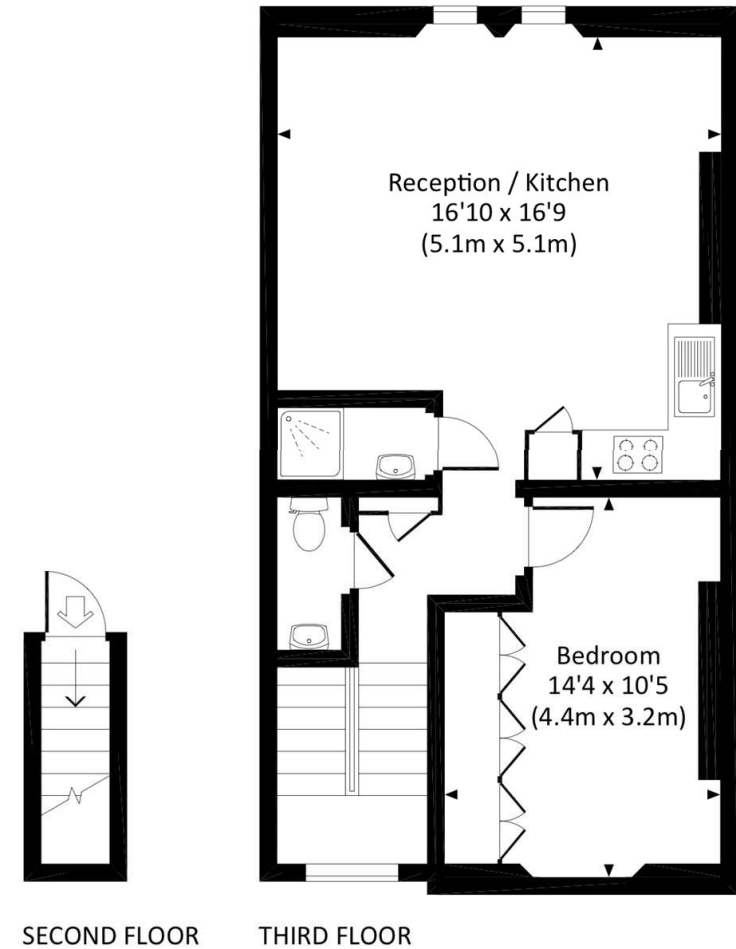
## FULL DETAILS

A bright top floor one bedroom apartment with wooden floors situated in this fantastic location on Westbourne Grove. The property consists of an open plan kitchen / reception room, double bedroom with plenty of storage, shower room and is located in a striking period building. The wonderful shops and eateries of Westbourne Grove are literally moments away and Notting Hill Gate tube (Central, Circle & District Lines) is a short walk away.

## PROPERTY FEATURES

- Period Building
- Located on Westbourne Grove
- Double Glazing
- Wooden Floors
- Plenty of Storage
- 552 sq ft / 51.3 m<sup>2</sup>
- Kensington and Chelsea Council tax band D

Energy Efficiency Rating		Current	Potential
Very energy efficient - lower running costs			
(92+)	A		
(81-91)	B		
(69-80)	C		
(55-68)	D		
(39-54)	E	54	66
(21-38)	F		
(1-20)	G		
Not energy efficient - higher running costs			
England, Scotland & Wales		EU Directive 2002/91/EC	



All measurements have been made in accordance with RICS Code of Measuring Practice which are approximate only and only for illustrative purposes. For the avoidance of doubt, Dowling Jones Design shall not be liable for any reliance on these measurements. © 2019 www.dowlingjones.com 020 7610 9933

\*Tenant admin fee: 1 person (£100 + VAT), 2 people (£200 + VAT), 3 people (£250 + VAT), 4 people (£300 + VAT), Referencing: £30 per person, Renewal Agreement fee: £50 (including VAT). Typical deposit equal to 6 weeks rent and rent is paid in advance (normally monthly or quarterly). There will be a check out fee at the end of the tenancy, the price of which will depend on the size of the property. N.B. We have produced these sales particulars as a general guide. It is essential that you check with us before undertaking an inspection. We have not carried out a detailed survey of the property and have not tested the services, appliances or specific fittings. Room sizes are for general guidance purposes and should not be relied upon for fitting carpets or furnishings. Pictures may have been digitally enhanced. Floor plans are not to scale. Fittings shown on floor plans may not match the actual layout or size of fittings at the property. None of the statements as to the property contained in these particulars are to be relied upon as statements or representations of fact. All statements in these particulars as to this property are made without responsibility on the part of Homesite. The vendor does not make or give and neither Homesite nor any person in their employment has the authority to make or give any representation or warranty whatever in relation to this property.