



St Stephens Gardens
Notting Hill, W2

£660,000

🛏️ 2 🚪 1 🏠 Flat/Apartment

HOMESITE

Bright two double bedroom apartment with lift access

FULL DETAILS

A bright two double bedroom apartment located on the fourth floor of this striking period building with lift access. The apartment is well laid out with a large reception room, which opens up onto a modern open plan kitchen, two double bedrooms, good storage and a family bathroom. The property also looks out over peaceful communal gardens and is superbly located for access into Notting Hill & Bayswater providing a huge variety of shops, bars, cafes and restaurants. There are excellent transport links close by including a multiple of bus routes and tube stations including Westbourne Park (Hammersmith & City and Circle lines) and Notting Hill Gate (Central, Circle and District lines).

PROPERTY FEATURES

- Period conversion
- Two double bedrooms
- Plenty of natural light
- Modern Decor
- Fourth floor with lift
- Overlooking a communal garden
- Council Tax Band D - Westminster City council

PROPERTY INFO

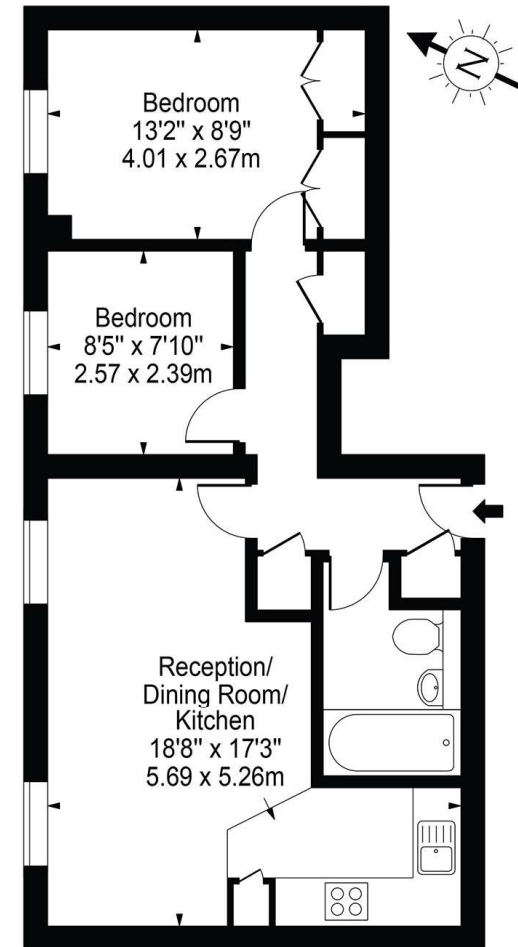
TENURE
Leasehold, approx. 103 years

SERVICE CHARGE
£1493.00 pa

GROUND RENT
£200 pa

Energy Efficiency Rating		Current	Potential
Very energy efficient - lower running costs			
(92+)	A		
(81-91)	B		86
(69-80)	C		
(55-68)	D	64	
(39-54)	E		
(21-38)	F		
(1-20)	G		
Not energy efficient - higher running costs			
England, Scotland & Wales		EU Directive 2002/91/EC	

St. Stephen's Gardens, W2
Approx. Gross Internal Area 560 Sq Ft - 52.03 Sq M



Fourth Floor

For Illustration Purposes Only - Not To Scale

This floor plan should be used as a general outline for guidance only and does not constitute in whole or in part an offer or contract. Any intending purchaser or lessee should satisfy themselves by inspection, searches, enquiries and full survey as to the correctness of each statement. Any areas, measurements or distances quoted are approximate and should not be used to value a property or be the basis of any sale or let.

*Tenant admin fee: 1 person (£100 + VAT), 2 people (£200 + VAT), 3 people (£250 + VAT), 4 people (£300 + VAT), Referencing: £30 per person, Renewal Agreement fee: £50 (including VAT). Typical deposit equal to 6 weeks rent and rent is paid in advance (normally monthly or quarterly). There will be a check out fee at the end of the tenancy, the price of which will depend on the size of the property. N.B. We have produced these sales particulars as a general guide. It is essential that you check with us before undertaking an inspection. We have not carried out a detailed survey of the property and have not tested the services, appliances or specific fittings. Room sizes are for general guidance purposes and should not be relied upon for fitting carpets or furnishings. Pictures may have been digitally enhanced. Floor plans are not to scale. Fittings shown on floor plans may not match the actual layout or size of fittings at the property. None of the statements as to the property contained in these particulars are to be relied upon as statements or representations of fact. All statements in these particulars as to this property are made without responsibility on the part of Homesite. The vendor does not make or give and neither Homesite nor any person in their employment has the authority to make or give any representation or warranty whatever in relation to this property.