

Queensborough Terrace
Bayswater, W2

£2,200 per month
🛏️ 2 🚿 1 🏠 Flat/Apartment

HOMESITE

Two double bedroom apartment with patio

FULL DETAILS

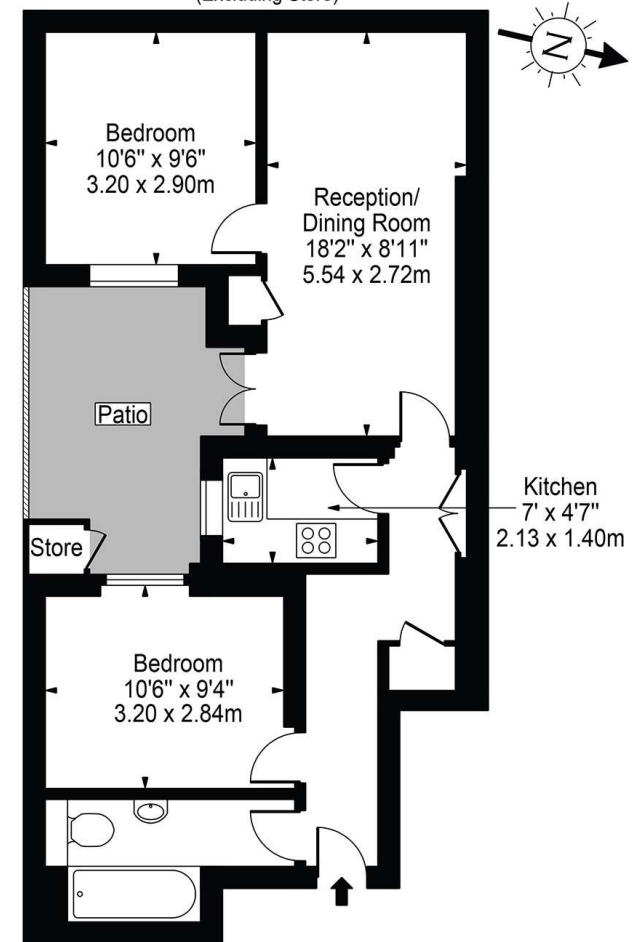
Spacious two double bedroom apartment with access to a private patio. The property comprises of two double bedrooms, reception room with patio access, separate kitchen and a family bathroom. Located on this quiet street a short walk from Hyde Park and moments from the vast amenities of Bayswater including the exciting Whiteleys regeneration project. Bayswater and Queensway tube stations are also close by giving you access to the central, circle and district tube lines as well as Paddington rail and tube station with the Elizabeth line and Heathrow Express.

PROPERTY FEATURES

- Two Double Bedrooms
- Private Courtyard
- Reception Room
- Separate Kitchen
- Family Bathroom
- Moments from Hyde Park
- Approx 560 sq ft / 52 m2
- Short walk to Queensway & Bayswater station
- Council Tax Band E - Westminster City

Energy Efficiency Rating		Current	Potential
Very energy efficient - lower running costs			
(92-)	A		
(81-91)	B		
(69-80)	C		
(55-68)	D	66	76
(39-54)	E		
(21-38)	F		
(1-20)	G		
Not energy efficient - higher running costs			
England, Scotland & Wales		EU Directive 2002/91/EC	

Queensborough Terrace, W2
 Approx. Gross Internal Area 560 Sq Ft - 52.03 Sq M
 (Excluding Store)



Lower Ground Floor

For Illustration Purposes Only - Not To Scale

This floor plan should be used as a general outline for guidance only and does not constitute in whole or in part an offer or contract. Any intending purchaser or lessee should satisfy themselves by inspection, searches, enquiries and full survey as to the correctness of each statement. Any areas, measurements or distances quoted are approximate and should not be used to value a property or be the basis of any sale or let.

*Tenant admin fee: 1 person (£100 + VAT), 2 people (£200 + VAT), 3 people (£250 + VAT), 4 people (£300 + VAT), Referencing: £30 per person, Renewal Agreement fee: £50 (including VAT). Typical deposit equal to 6 weeks rent and rent is paid in advance (normally monthly or quarterly). There will be a check out fee at the end of the tenancy, the price of which will depend on the size of the property. N.B. We have produced these sales particulars as a general guide. It is essential that you check with us before undertaking an inspection. We have not carried out a detailed survey of the property and have not tested the services, appliances or specific fittings. Room sizes are for general guidance purposes and should not be relied upon for fitting carpets or furnishings. Pictures may have been digitally enhanced. Floor plans are not to scale. Fittings shown on floor plans may not match the actual layout or size of fittings at the property. None of the statements as to the property contained in these particulars are to be relied upon as statements or representations of fact. All statements in these particulars as to this property are made without responsibility on the part of Homesite. The vendor does not make or give and neither Homesite nor any person in their employment has the authority to make or give any representation or warranty whatever in relation to this property.