



Stanley Crescent
Notting Hill, W11

£3,000 per month
🛏️ 2 🪑 2 🏠 Flat/Apartment

HOMESITE

Bright two bedroom apartment with communal gardens

Stanley Crescent

Approximate Gross Internal Area
753 sq ft / 70 sq m

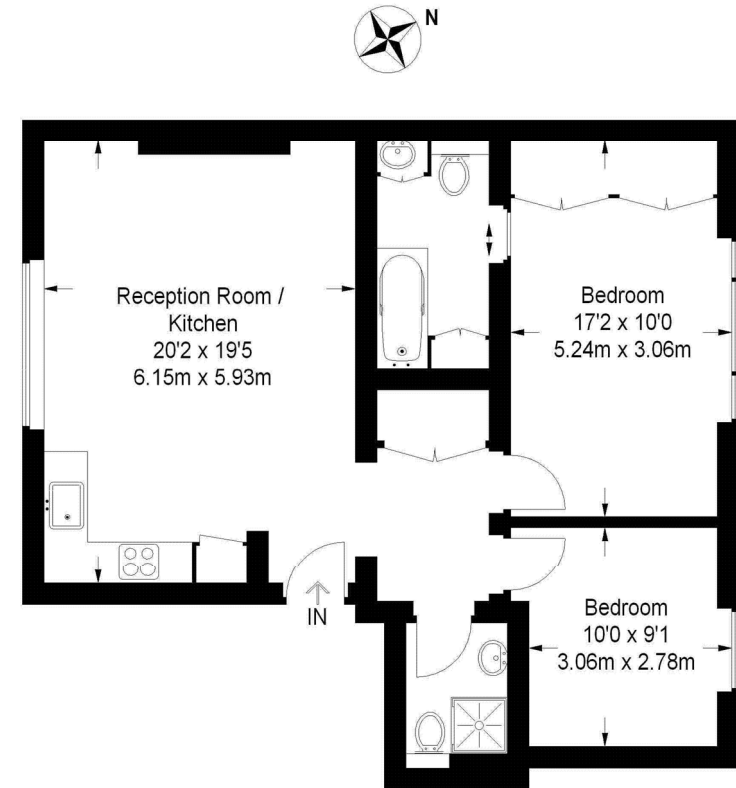
FULL DETAILS

Spacious two bedroom, two bathroom apartment on the third floor (with lift) of a lovely period property on Stanley Crescent. Stylishly finished and with views over stunning communal gardens. Notting Hill Gate tube (Central Circle District), Westbourne Grove & Portobello Road are all within a short walk. Hyde Park & Paddington Mainline Station (Heathrow Express) and Elizabeth line are also close at hand.

PROPERTY FEATURES

- Two Double Bedrooms
- En-suite Bathroom
- Reception Room overlooking Gardens
- Open Plan Kitchen
- Second Family Bathroom
- Lift Access
- Communal Gardens
- Sought-after Notting Hill Location
- approx. 753 sq ft / 70 m²
- Kensington & Chelsea Band G

Energy Efficiency Rating		Current	Potential
Very energy efficient - lower running costs			
(92-)	A		
(81-91)	B		
(69-80)	C		
(55-68)	D		
(39-54)	E		
(21-38)	F		
(1-20)	G		
Not energy efficient - higher running costs			
England, Scotland & Wales		70	79
EU Directive 2002/91/EC			



Third Floor

For illustrative purposes only. Not to scale.
Floorplan created by FRESH PHOTO HOUSE.