



Queensway
Bayswater, W2

£675,000

 2  1  Flat/Apartment

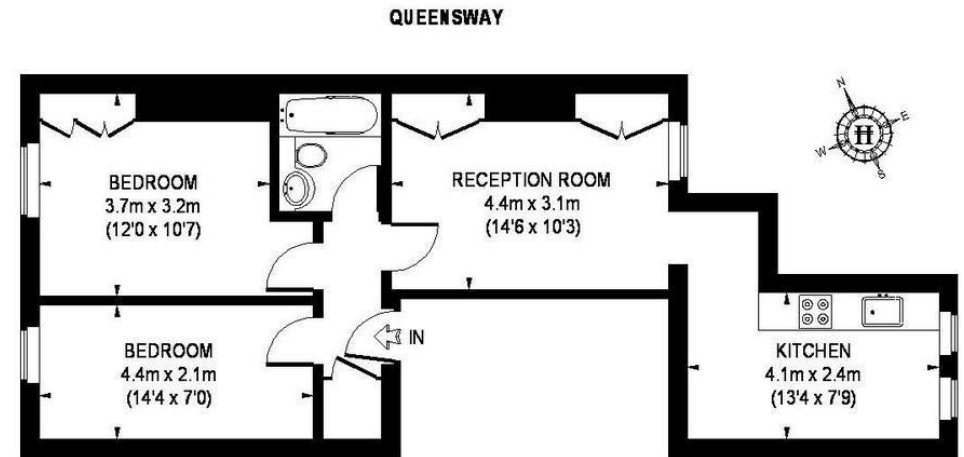
HOMESITE

Bright two double bedroom apartment

Moments from Hyde Park

FULL DETAILS

Exceptionally light, two bedroom apartment with plenty of storage and wood floors. Set in this period building on Queensway the apartment has good ceiling heights, two spacious double bedrooms, modern fully fitted separate eat in kitchen & family bathroom. The apartment is conveniently located moments from both Bayswater (Circle & District lines) & Queensway (Central line) underground stations along with the large variety of shops, restaurants and cafes of Queensway. It is also in close proximity to the exciting new Whiteleys regeneration project which promises to make this area an even more vibrant destination in West London. Hyde Park & Paddington Mainline Station with the Heathrow express and Elizabeth line are also close at hand.



APPROXIMATE GROSS INTERNAL AREA = 603 SQ. FT. (56 SQ. M.)

This plan is for layout guidance only. Not drawn to scale unless stated. Windows & door openings are approximate. Whilst every care is taken in the preparation of this plan, please check all dimensions, shapes & compass bearings before making any decisions reliant upon them.

PROPERTY FEATURES

- Two Double Bedrooms
- Full of natural light
- Wooden Floors
- Separate Kitchen
- Family Bathroom
- Moments from Bayswater tube station
- Short walk to Hyde Park
- Approx. 603 sq. ft / 56 m2
- Council Tax Band G - Westminster Council

PROPERTY INFO

TENURE
Leasehold, approx. 114 years remaining

SERVICE CHARGE
approx. £1141 pa

Energy Efficiency Rating		Current	Potential
Very energy efficient - lower running costs			
(92-)	A		
(81-91)	B		
(69-80)	C		
(55-68)	D		
(39-54)	E		
(21-38)	F		
(1-20)	G		
Not energy efficient - higher running costs			
England, Scotland & Wales		77	80
EU Directive 2002/91/EC			