

Pembridge Road
Notting Hill, W11

£325,000

 1  1  Flat/Apartment

HOMESITE

Refurbished studio apartment with wooden floors

FULL DETAILS

Refurbished studio apartment located on the first floor of this period building moments from Notting Hill Gate tube. The property is in excellent condition with wooden floors, open plan and well equipped kitchen, built in storage and a modern shower room. Situated in the heart of Notting Hill Gate with an incredible array of cafes, restaurants, shops and eateries on your doorstep. Superb transport links are moments away with the Central, Circle and District line tubes only a few minutes away along with multiple bus routes. The fashionable Westbourne Grove and world famous Portobello Road are also close by giving access to yet more amenities. Hyde Park is also close at hand.

PROPERTY FEATURES

- Double Bedroom with storage
- 1st Floor West facing Apartment
- Built in Wardrobes
- Period Conversion with High Ceilings
- Wooden Floors
- Open Plan Reception / Kitchen
- 417 sq ft / 38.7 m²
- 3 minutes walk to Notting Hill Gate Underground station

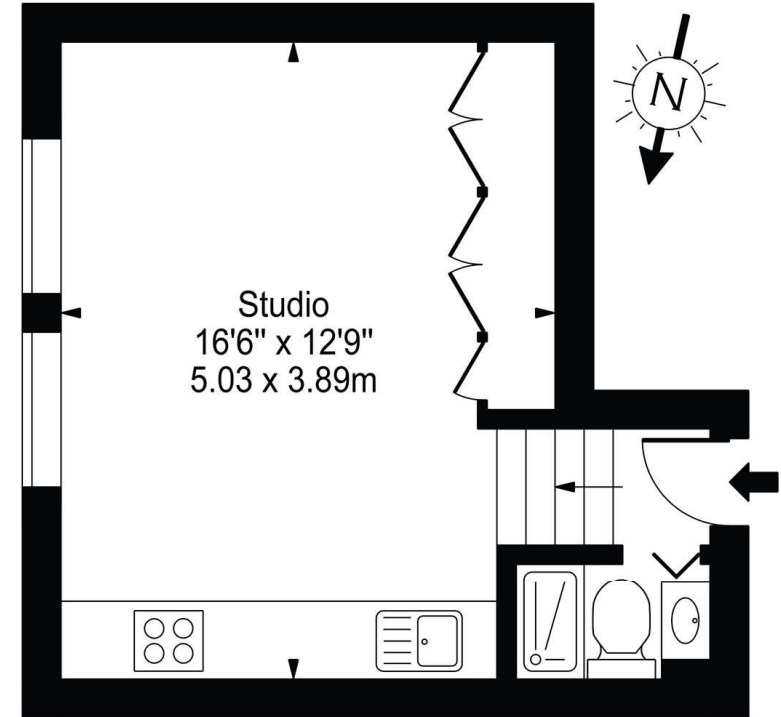
PROPERTY INFO

TENURE
Leasehold, 125 years remaining

SERVICE CHARGE
TBC

Energy Efficiency Rating		Current	Potential
Very energy efficient - lower running costs			
(92+)	A		
(81-91)	B		86
(69-80)	C	72	
(55-68)	D		
(39-54)	E		
(21-38)	F		
(1-20)	G		
Not energy efficient - higher running costs			
England, Scotland & Wales		EU Directive 2002/91/EC	

Pembridge Road, W11
Approx. Gross Internal Area 236 Sq Ft - 21.93 Sq M



Raised Ground Floor

For Illustration Purposes Only - Not To Scale

This floor plan should be used as a general outline for guidance only and does not constitute in whole or in part an offer or contract. Any intending purchaser or lessee should satisfy themselves by inspection, searches, enquiries and full survey as to the correctness of each statement. Any areas, measurements or distances quoted are approximate and should not be used to value a property or be the basis of any sale or let.