



Hyde Park Street
Hyde Park, W2

OIRO £1,100,000

 2  2  Flat/Apartment

HOMESITE

Bright two-bedroom apartment with lift access

FULL DETAILS

Flooded with light, this immaculately presented two bedroom apartment is bright and airy and has beautiful views over Hyde Park. Situated on the third floor of this striking period building with direct lift access into the flat.

The property offers a large reception room, a separate kitchen, a spacious master bedroom with en-suite shower room, a study/office area and a family bathroom.

Located in the heart of the Hyde Park Estate, between Lancaster Gate & Marble Arch tube underground stations, and close to Paddington with easy access to the Heathrow express and Elizabeth Line.

PROPERTY FEATURES

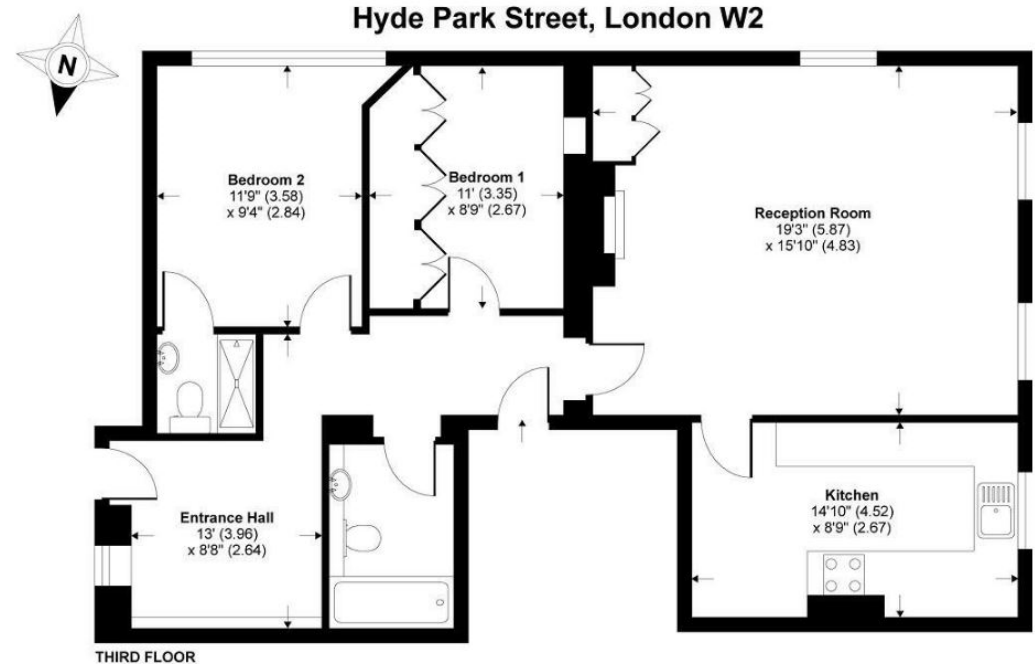
- Two bedrooms
- Lift access
- Lovely views over Hyde Park
- Good storage
- Separate kitchen
- 896sqft / 83.2m²
- Short walk to Marble Arch & Lancaster Gate
- Close to Paddington station (Heathrow Express & Elizabeth Line)

PROPERTY INFO

TENURE
Share of Freehold, 979 years remaining

SERVICE CHARGE
£8000 per annum

Energy Efficiency Rating		Current	Potential
Very energy efficient - lower running costs			
(92-)	A		
(81-91)	B		
(69-80)	C		
(55-68)	D		
(39-54)	E		
(21-38)	F		
(1-20)	G		
Not energy efficient - higher running costs			
England, Scotland & Wales		69	80
EU Directive 2002/91/EC			



TOTAL GROSS INTERNAL FLOOR AREA 896 SQFT / 83.2 SQM