



Kensington Court
Kensington, W8

£705 per week

🛏️ 2 🪑 2 🏠 Flat/Apartment

HOMESITE

Bright two double bedroom apartment in this beautiful Kensington location

FULL DETAILS

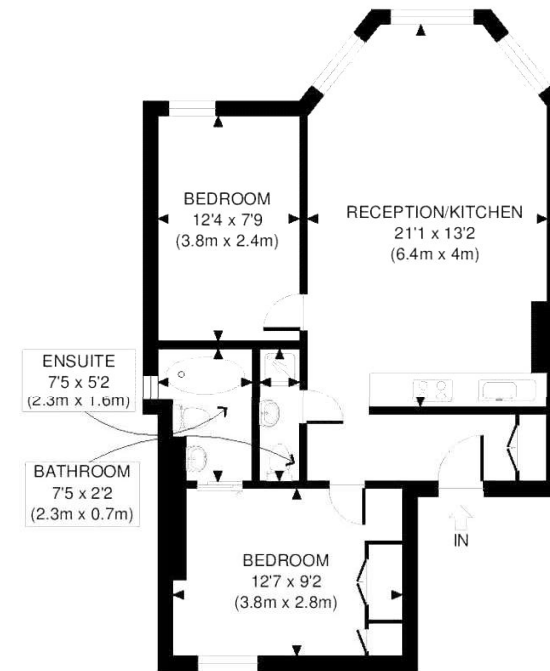
A bright two double bedroom, 2 bathroom (one en-suite) south facing apartment (with lift) and views over communal gardens. Set within a mid-terraced period property on the second floor (lift access) the apartment has high ceilings, wood floors and plenty of natural light. Kensington Court is a quiet residential crescent located less than five minutes' walk to both Kensington High Street and Gloucester Road with their fantastic mix of restaurants, cafes, bars shopping, underground stations and bus services. Kensington Gardens are less than two minutes' walk.

PROPERTY FEATURES

- Two Double Bedrooms
- Two Bathrooms
- Quiet Kensington Location
- Garden Square Views
- 2 Minutes To Kensington Gardens
- Contemporary Finish
- 595 Sq Ft / 55.3Sq M
- 5 Minutes' Walk To High Street Kensington Tube (Circle & District Lines)



Kensington Court, W8



SECOND FLOOR
GROSS INTERNAL
FLOOR AREA 595 SQ FT

APPROX. GROSS INTERNAL FLOOR AREA 595 SQ FT / 55 SQM
Ref: Copyright



Disclaimer: Floor plan measurements are approximate and are for illustrative purposes only. While we do not doubt the floor plan accuracy and completeness, you or your advisors should conduct a careful, independent investigation of the property in respect of monetary valuation