

Hereford Road  
Notting Hill  
W2

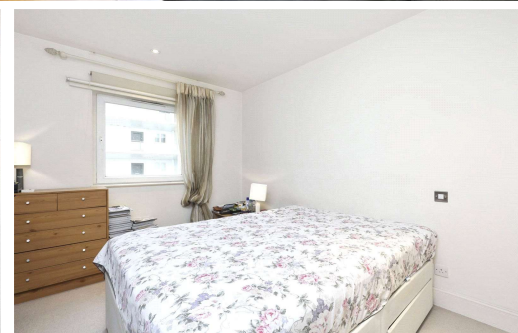
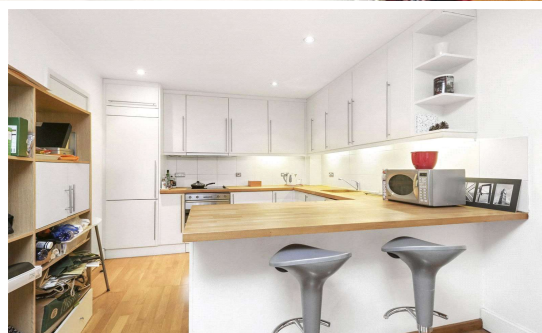
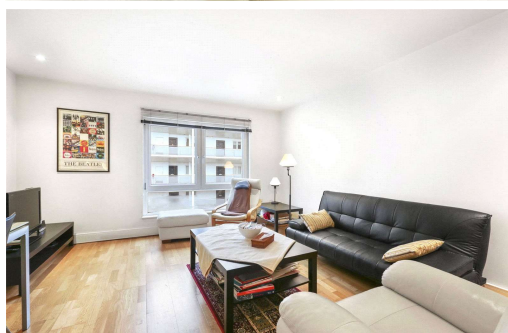
£490 per week

**Homesite**  
estate agents

020 7243 3535

info@homesite.co.uk

[www.homesite.co.uk](http://www.homesite.co.uk)



An incredibly spacious and modern one bedroom apartment

Homesite is a registered trading name of  
NAH Estates (agency) Ltd.  
Registered in England No 5475061

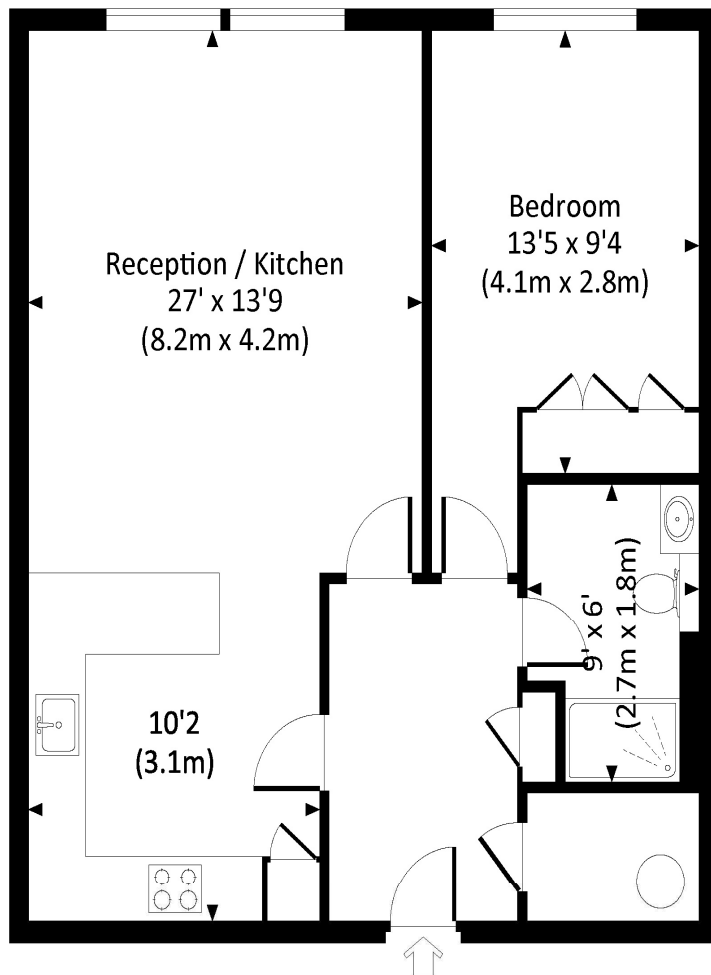
199 Westbourne Grove, Notting Hill, London, W11 2SB

## Hereford Road, Notting Hill, W2

An incredibly spacious and modern one bedroom apartment located on the 4th floor of this sought after portered building. With an abundance of natural light, modern kitchen and bathroom, 24 hr porter and on site gym, this apartment certainly has plenty to offer. Located just off Westbourne Grove with a great variety of shops, restaurants, bars and transport links on your doorstep. Notting Hill and Bayswater tube stations and the vast expanses of Hyde Park are all a short walk away. Viewing is highly recommended.

### HEREFORD ROAD, W2

Approx. gross internal area  
632 Sq Ft. / 58.7 Sq M.



FOURTH FLOOR

Wooden Floors

Open Plan Reception Room / Kitchen

Large Double Bedroom with storage

Lift

24 hour porter

On-site Gym

632 sq ft / 58.7 m<sup>2</sup>

Energy Efficiency Rating		
	Current	Potential
Very energy efficient - lower running costs		
(92+) <b>A</b>		
(81-91) <b>B</b>		<b>81</b>
(69-80) <b>C</b>	<b>71</b>	
(55-68) <b>D</b>		
(39-54) <b>E</b>		
(21-38) <b>F</b>		
(1-20) <b>G</b>		
Not energy efficient - higher running costs		
<b>England, Scotland &amp; Wales</b>	EU Directive 2002/91/EC	

All measurements have been made in accordance with NICE Code of Measuring Practice which are approximate only and only for illustrative purposes. For the avoidance of doubt, Downing Jones Design shall not be liable for any reliance on these measurements. © 2018 www.downingjones.com 020 7610 9933

\*Situations that may arise where a charge may become due. Varying a tenancy: A charge of £50.00 may be levied unless we, as the agent, can demonstrate greater costs were incurred to implement the requested changes to vary, assign or replace a tenancy. Payment on termination of a tenancy: A payment for an early termination of the tenancy may be raised if a tenant requests to end a tenancy outside of any provisions provided within the tenancy agreement to do so. The payment cannot exceed the loss suffered by the landlord or reasonable costs incurred by us, the letting agent. Payments in the event of a default: A payment may be required in the event of a default (e.g. requesting a replacement for a lost key). The amount charged will not exceed the loss suffered by the landlord. N.B. We have produced these sales particulars as a general guide. It is essential that you check with us before undertaking an inspection. We have not carried out a detailed survey of the property and have not tested the services, appliances or specific fittings. Room sizes are for general guidance purposes and should not be relied upon for fitting carpets or furnishings. Pictures may have been digitally enhanced. Floor plans are not to scale. Fittings shown on floor plans may not match the actual layout or size of fittings at the property. None of the statements as to the property contained in these particulars are to be relied upon as statements or representations of fact. All statements in these particulars as to this property are made without responsibility on the part of Homesite. The landlord does not make or give and neither Homesite nor any person in their employment has the authority to make or give any representation or warranty whatever in relation to this property.