

Hornton Street  
Kensington, W8

£4,250 per month

 2  2  Flat/Apartment

**HOMESITE**

HORNTON STREET, KENSINGTON, W8

# Grand Two Bedroom Apartment with great views near High Street Kensington

## FULL DETAILS

A lovely grand apartment in this attractive period building, with great views, in the heart of Kensington, moments from Kensington High Street. The property is full of character and has wonderful high ceilings throughout along with a large master bedroom, second double bedroom, two bathrooms and a bright and spacious reception room with three sash windows. The separate kitchen is modern and well equipped and both bathrooms are in good condition. Situated a short walk from both High Street Kensington & Notting Hill Gate the property is perfectly placed for some of London's finest shops, bars and restaurants. Hyde Park and Kensington Gardens are also close by.

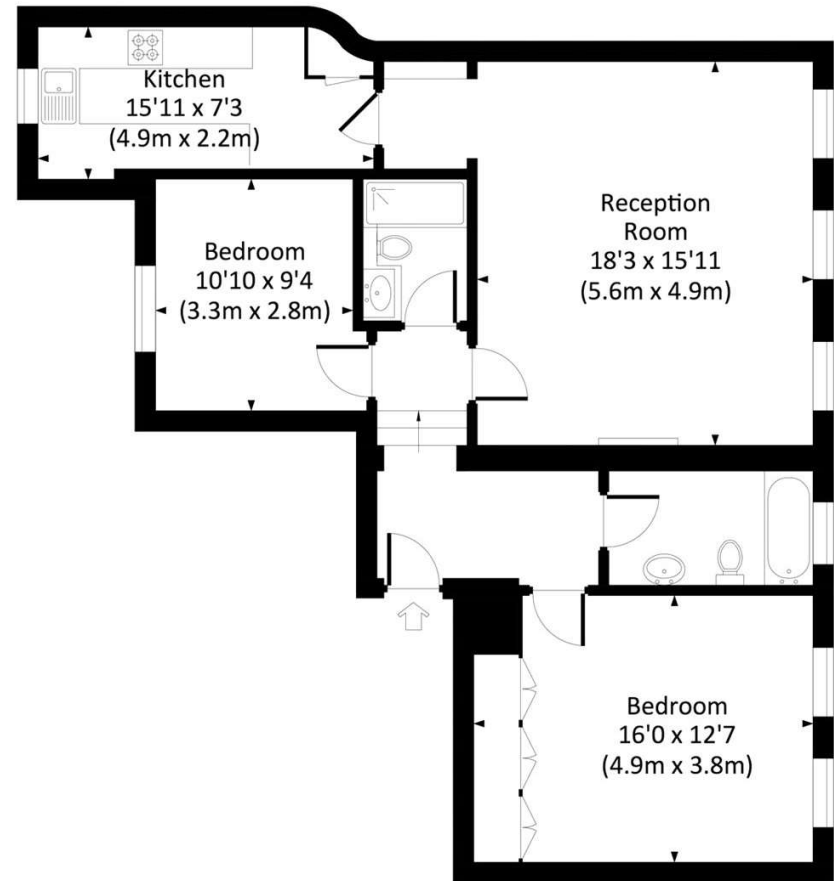
## PROPERTY FEATURES

- Fantastic view
- Feature fire place
- Two double bedrooms
- Two contemporary bathrooms
- High ceilings
- Separate modern kitchen
- Plenty of natural light
- 955 Sq. Ft / 88.7 Sq. Sqm
- Kensington & Chelsea Council - Band G

Energy Efficiency Rating		Current	Potential
Very energy efficient - lower running costs			
(92+)	A		
(81-91)	B		
(69-80)	C		
(55-68)	D	68	
(39-54)	E		
(21-38)	F		
(1-20)	G		80
Not energy efficient - higher running costs			
England, Scotland & Wales		EU Directive 2002/91/EC	

HORNTON STREET, W8

Approx. gross internal area  
955 Sq Ft. / 88.7 Sq M.



SECOND FLOOR



All measurements have been made in accordance with RICS code of Measuring Practice which are approximate only and only for illustrative purposes. For the avoidance of doubt, Dowling Jones Design shall not be liable for any reliance on these measurements. © 2018 www.dowlingjones.com 020 7610 9933

HOMESITE

199 Westbourne Grove  
Notting Hill  
London, W11 2SB

020 7243 3535  
info@homesite.co.uk  
homesite.co.uk

\*Tenant admin fee: 1 person (£100 + VAT), 2 people (£200 + VAT), 3 people (£250 + VAT), 4 people (£300 + VAT), Referencing: £30 per person, Renewal Agreement fee: £50 (including VAT). Typical deposit equal to 6 weeks rent and rent is paid in advance (normally monthly or quarterly). There will be a check out fee at the end of the tenancy, the price of which will depend on the size of the property. N.B. We have produced these sales particulars as a general guide. It is essential that you check with us before undertaking an inspection. We have not carried out a detailed survey of the property and have not tested the services, appliances or specific fittings. Room sizes are for general guidance purposes and should not be relied upon for fitting carpets or furnishings. Pictures may have been digitally enhanced. Floor plans are not to scale. Fittings shown on floor plans may not match the actual layout or size of fittings at the property. None of the statements as to the property contained in these particulars are to be relied upon as statements or representations of fact. All statements in these particulars as to this property are made without responsibility on the part of Homesite. The vendor does not make or give and neither Homesite nor any person in their employment has the authority to make or give any representation or warranty whatever in relation to this property.