



Westbourne Grove
Notting Hill, W11

£2,300 per month

 1  1  Flat/Apartment

HOMESITE

Modern and bright first floor apartment with wooden floors

FULL DETAILS

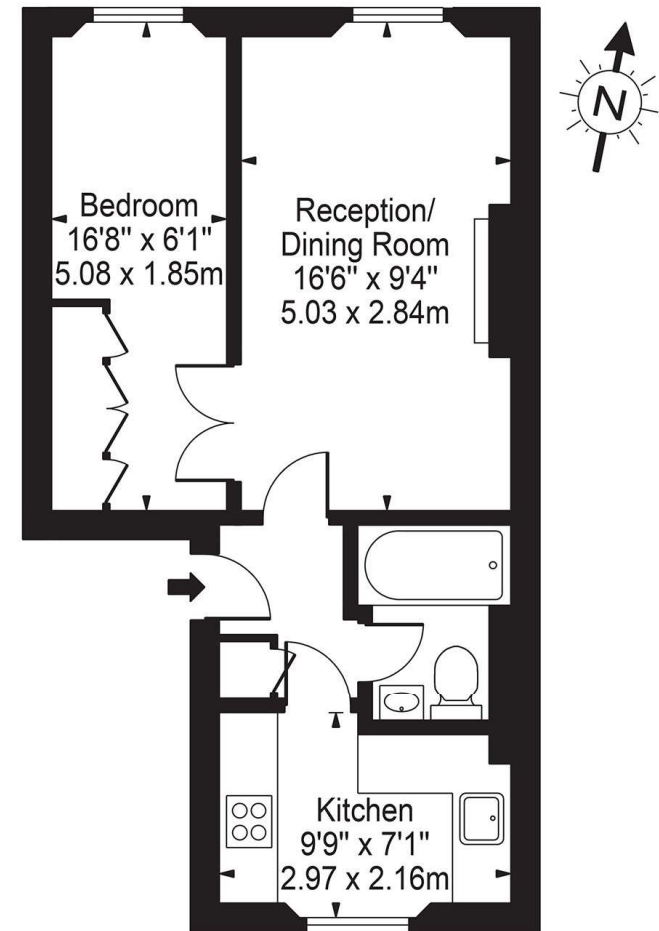
Bright first floor one bedroom apartment with modern decor and wooden floors. The property comprises of a bright reception room, double bedroom with storage, separate kitchen and modern bathroom. Located in the heart of Notting Hill with a large variety of shops, boutiques, cafes and restaurants on your doorstep. Notting Hill Gate tube is a short walk away.

PROPERTY FEATURES

- First Floor
- Double Bedroom with Storage
- Wooden Floors
- High Ceilings
- Separate Kitchen
- Modern Bathroom
- Council Tax Band D - Kensington & Chelsea

Energy Efficiency Rating		Current	Potential
Very energy efficient - lower running costs			
(92-)	A		
(81-91)	B		
(69-80)	C		75
(55-68)	D		
(39-54)	E	45	
(21-38)	F		
(1-20)	G		
Not energy efficient - higher running costs			
England, Scotland & Wales		EU Directive 2002/91/EC	

Westbourne Grove, W11
Approx. Gross Internal Area 397 Sq Ft - 36.88 Sq M



First Floor

For Illustration Purposes Only - Not To Scale

This floor plan should be used as a general outline for guidance only and does not constitute in whole or in part an offer or contract. Any intending purchaser or lessee should satisfy themselves by inspection, searches, enquiries and full survey as to the correctness of each statement. Any areas, measurements or distances quoted are approximate and should not be used to value a property or be the basis of any sale or let.