



De Vere Gardens  
Kensington, W8

£1,070,000

🛏️ 2 🚗 2 🏠 Flat/Apartment

HOMESITE

# Wonderfully spacious two bedroom apartment with a private patio

## FULL DETAILS

A wonderfully spacious two bedroom apartment situated in this striking period building moments from Hyde Park. Offered in very good condition this lovely apartment has wooden floors, two double bedrooms, two bathrooms (one en-suite), a large reception room which opens onto the private courtyard and a semi open-plan kitchen. De Vere Gardens is a sought after and attractive street set in the heart of Kensington with Kensington High Street right on your doorstep giving access to some fabulous shops, restaurants and cafes. High Street Kensington tube station (Circle & District line) is also a short walk away.

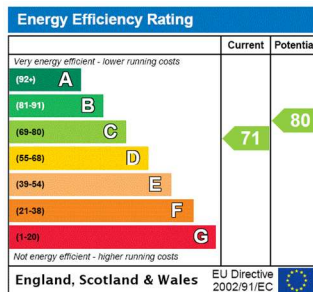
## PROPERTY FEATURES

- Period Building
- Two Double Bedrooms
- Two Bathrooms (one en-suite)
- Wooden Floors
- Private Courtyard
- Moments from Hyde Park
- Council Tax Band G – Kensington & Chelsea

## PROPERTY INFO

**TENURE**  
Share of Freehold

**SERVICE CHARGE**  
approx. £3,266.16 per 6 months

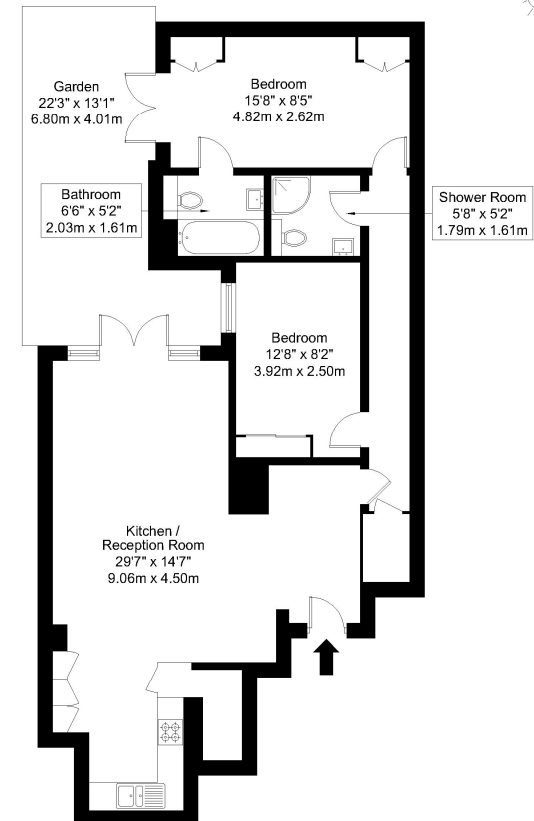


## De Vere Gardens, W8 5AR

Approx Gross Internal Area = 78.6 sq m / 846 sq ft

Garden = 20 sq m / 215 sq ft

Total = 98.5 sq m / 1060 sq ft



Lower Ground Floor

Ref:

Copyright **BLEU PLAN**

The Floor plan is not to scale and measurements and areas shown are approximate and therefore should be used for illustrative purposes only. The plan has been prepared in accordance with the RICS code of Measuring Practice and whilst we have confidence in the information produced it must not be relied on. Maximum lengths and widths are represented on the floor plan. If there is any aspect of particular importance, you should carry out or commission your own inspection of the property.

Copyright @ BLEUPLAN

\*Tenant admin fee: 1 person (£100 + VAT), 2 people (£200 + VAT), 3 people (£250 + VAT), 4 people (£300 + VAT), Referencing: £30 per person, Renewal Agreement fee: £50 (including VAT). Typical deposit equal to 6 weeks rent and rent is paid in advance (normally monthly or quarterly). There will be a check out fee at the end of the tenancy, the price of which will depend on the size of the property. N.B. We have produced these sales particulars as a general guide. It is essential that you check with us before undertaking an inspection. We have not carried out a detailed survey of the property and have not tested the services, appliances or specific fittings. Room sizes are for general guidance purposes and should not be relied upon for fitting carpets or furnishings. Pictures may have been digitally enhanced. Floor plans are not to scale. Fittings shown on floor plans may not match the actual layout or size of fittings at the property. None of the statements as to the property contained in these particulars are to be relied upon as statements or representations of fact. All statements in these particulars as to this property are made without responsibility on the part of Homesite. The vendor does not make or give and neither Homesite nor any person in their employment has the authority to make or give any representation or warranty whatever in relation to this property.